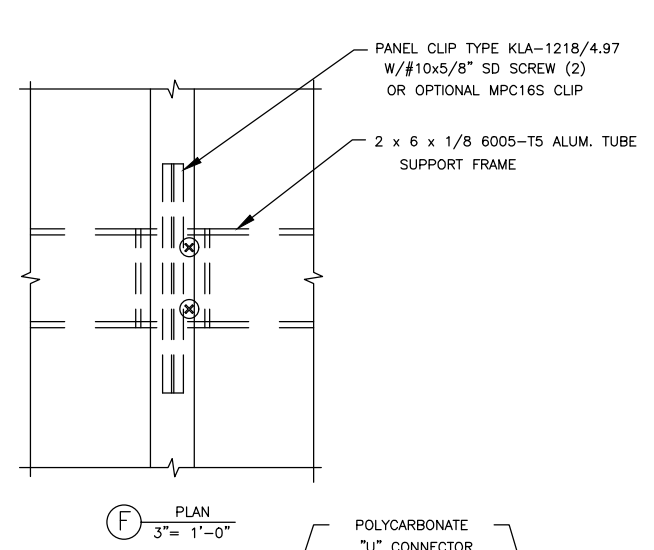
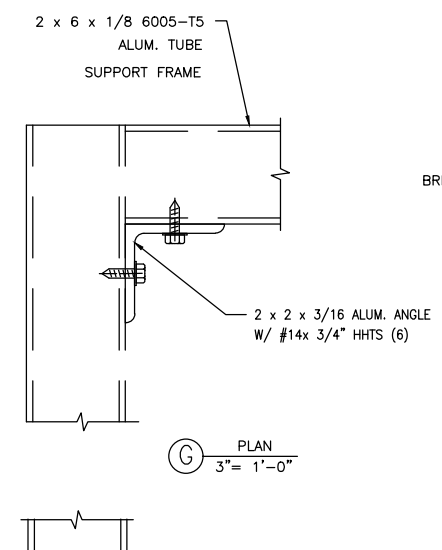


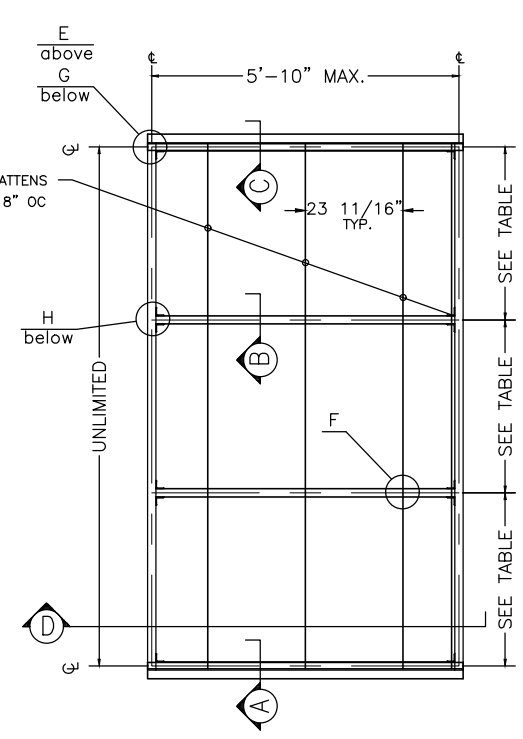
E PLAN
3" = 1'-0"



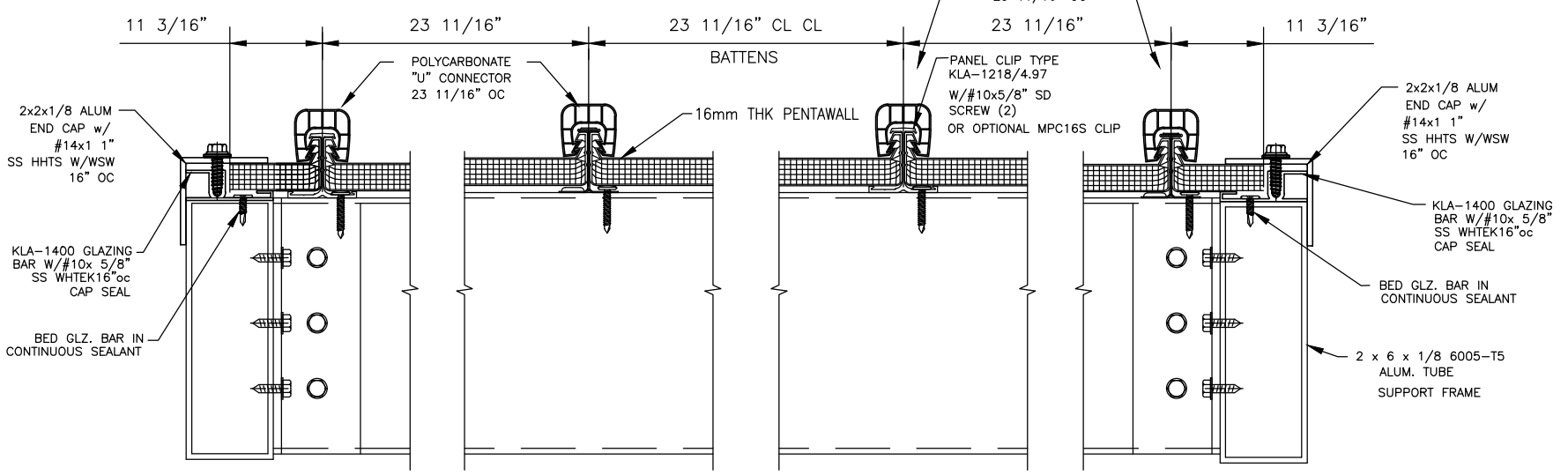
F PLAN
3" = 1'-0"



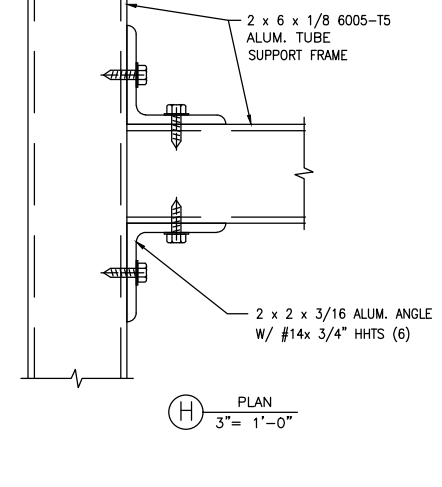
G PLAN
3" = 1'-0"



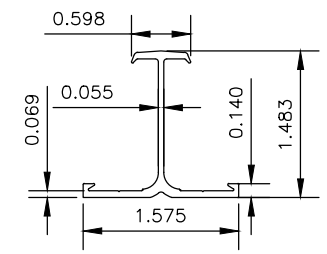
ROOF PLAN
KLA BRITWAY SKIN SYSTEM
not to scale



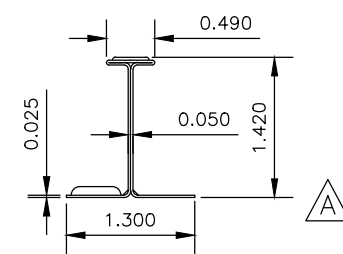
D SECTION
3" = 1'-0"



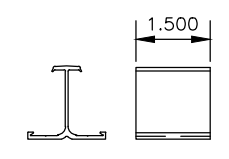
H PLAN
3" = 1'-0"



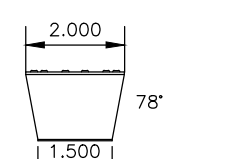
KLA-1218 PANEL CLIP
6005-T5 ALLOY & TEMPER
*MAX. DESIGN PRESSURE = SEE TABLE



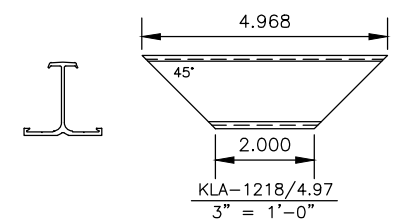
KLA-MPC16S PANEL CLIP
STAINLESS STEEL
*MAX. DESIGN PRESSURE = SEE TABLE



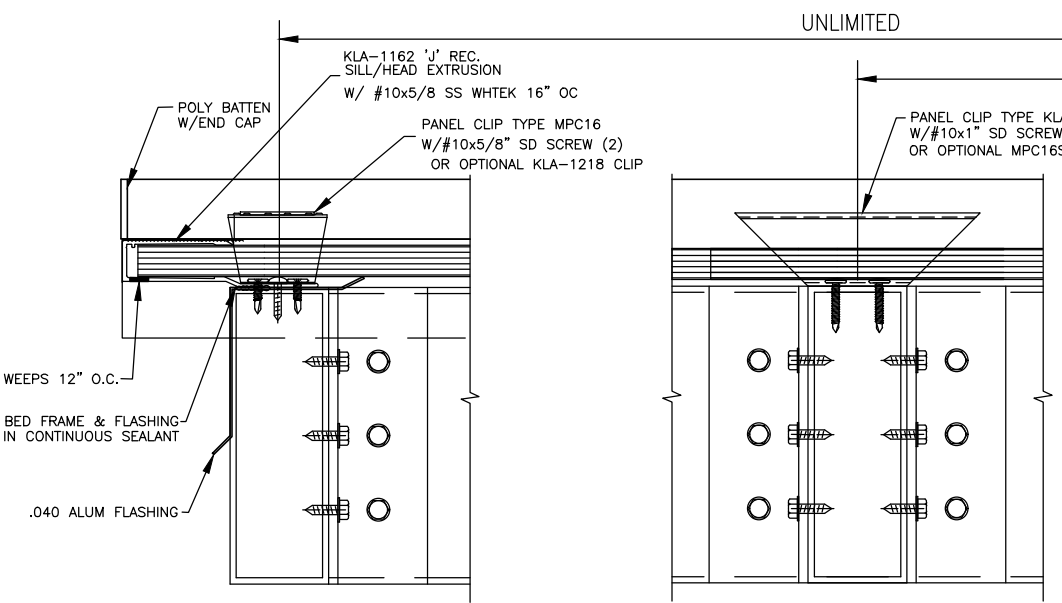
KLA-1218/1.5
3" = 1'-0"



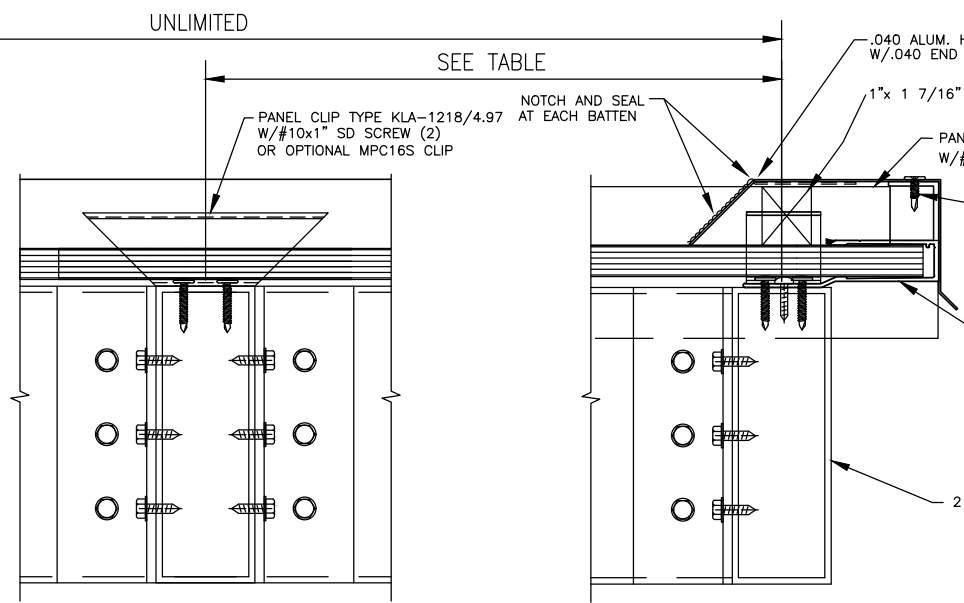
KLA-MPC16S
3" = 1'-0"



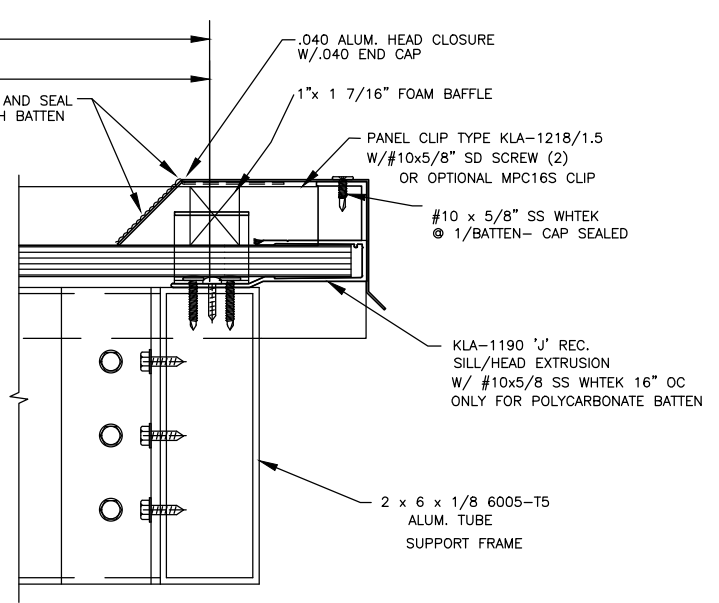
KLA-1218/4.97
3" = 1'-0"



A SECTION
3" = 1'-0"



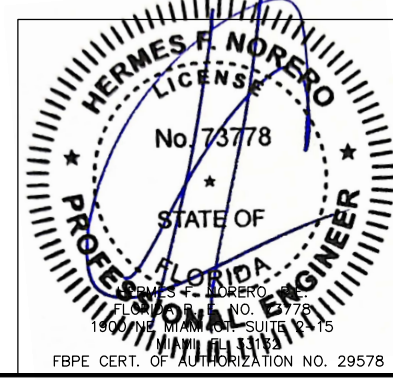
B SECTION
3" = 1'-0"



C SECTION
3" = 1'-0"

DESIGN LOAD (PSF) WITH 2X SAFETY FACTOR	CONNECTOR MATERIAL	PURLIN SPACING	DEFLECTION FOR "H" BATTEN	GLAZING THICKNESS
40 PSF	POLYCARBONATE	3'6"	1.90"	16MM
45 PSF	POLYCARBONATE	3'0"	1.30"	16MM
70 PSF	POLYCARBONATE	2'0"	0.66"	16MM

THE STRUCTURAL ADEQUACY OF THE SUPPORTING SUB STRUCTURE IS NOT PART OF THIS APPROVAL AND IT SHALL BE REVIEWED BY THE AUTHORITY HAVING JURISDICTION MAX. DESIGN PRESURE APPLIES TO ASSEMBLIES SUCH THAT PURLIN AND BATTEN SPACING ARE NOT EXCEEDED AS SHOWN HEREIN

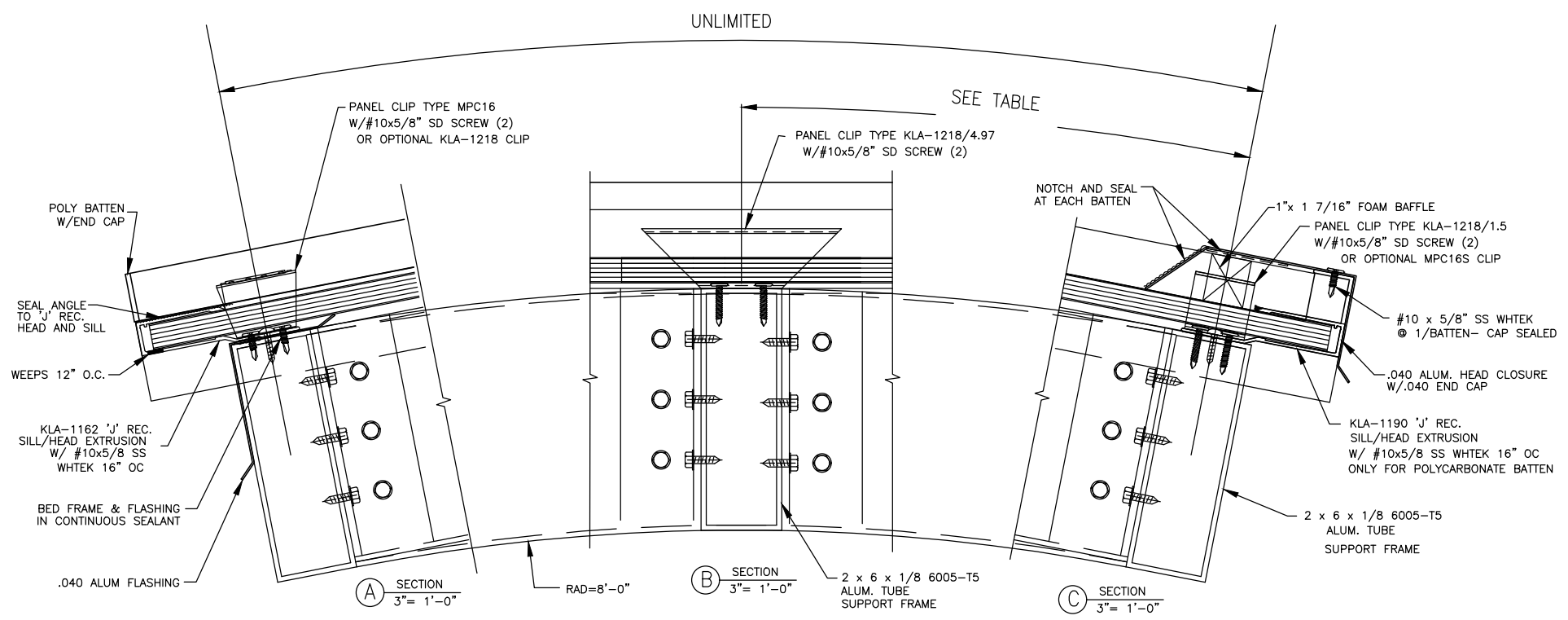
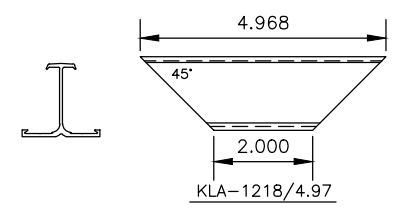
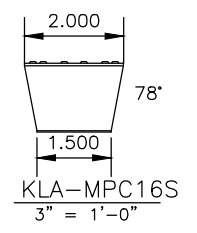
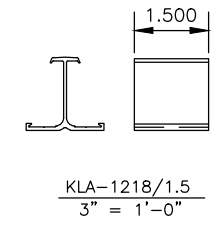
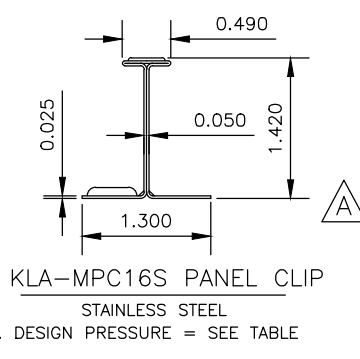
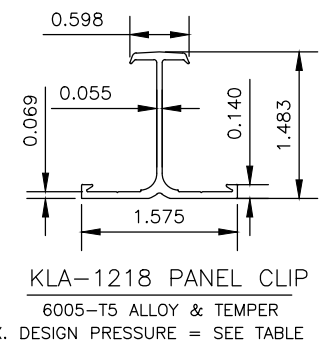
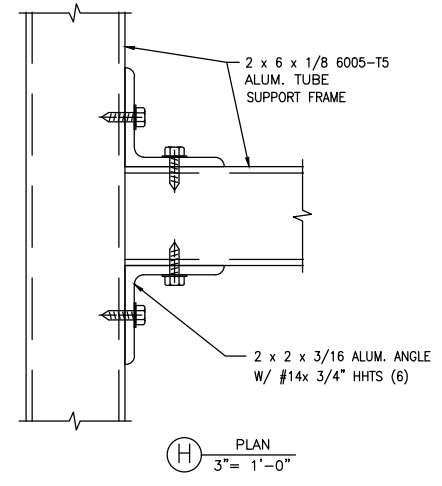
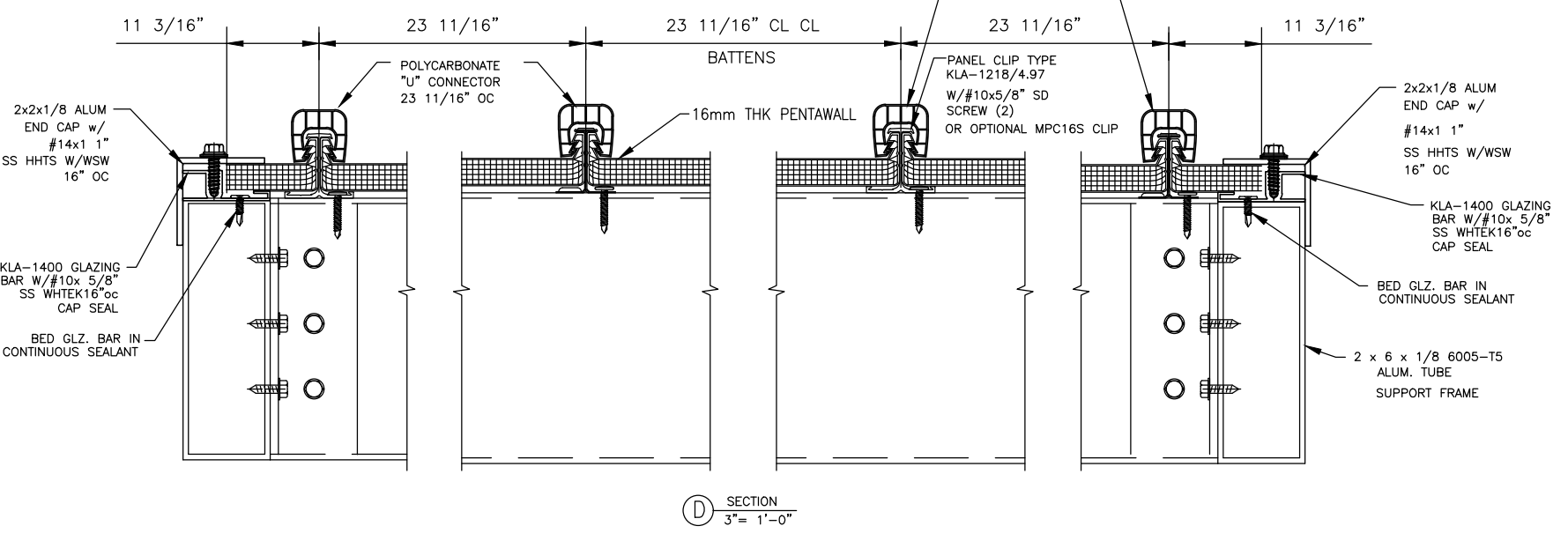
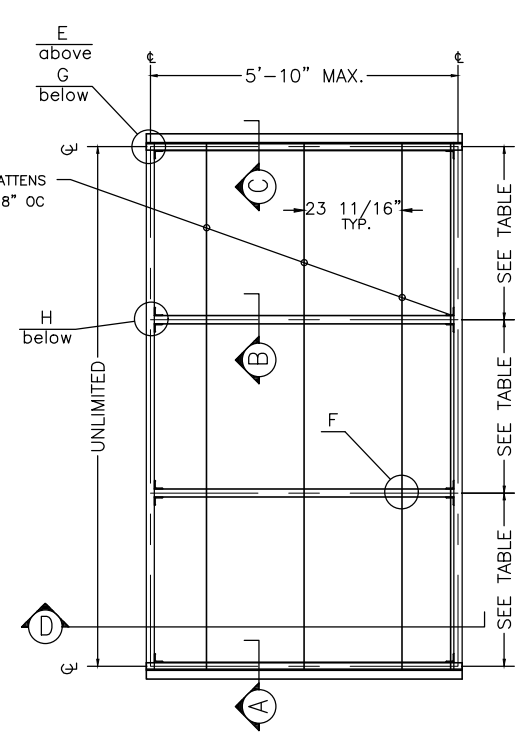
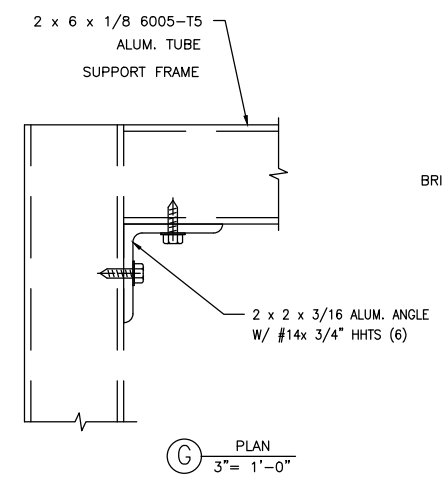
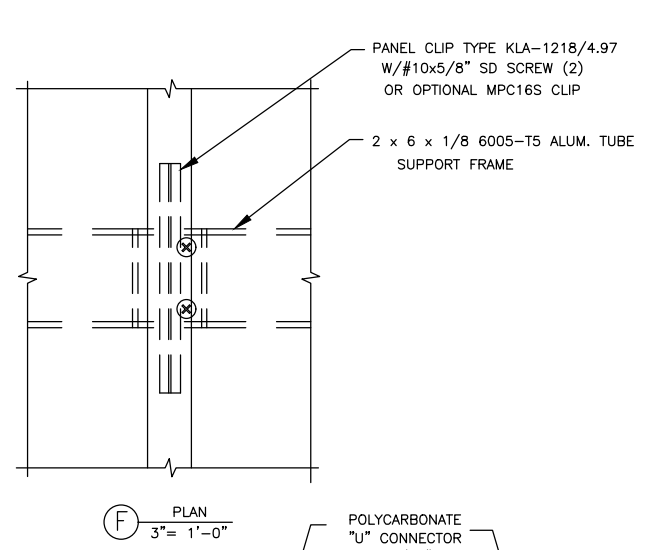
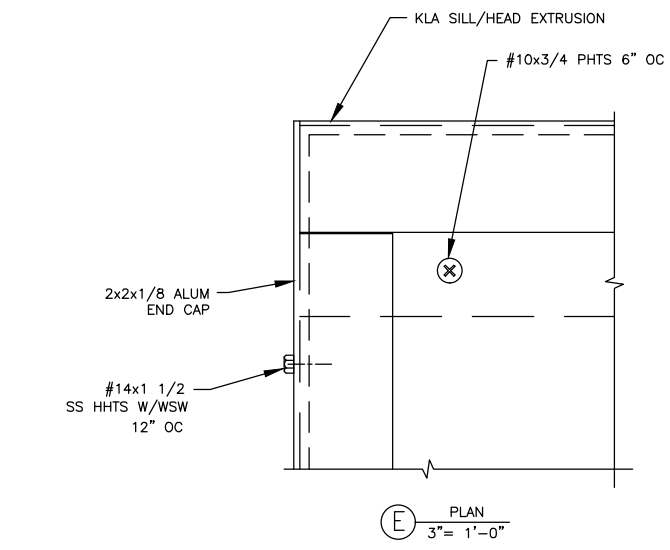


DATE	DESCRIPTION	REV.

Kingspan
Light-Air
28650 N. BALLARD DR., LAKE FOREST, IL 60045
(647) 816-1060 * FAX (647) 816-0425

PROJECT:	BRITWAY CANOPY SYSTEM
SAMPLE FOR TESTING PER	TAS 202-94, TAS 203-94
ARCHITECT:	
ERECTOR:	

DRAWING NO.	KLA012	REV.	
DRAWN BY	MG	DATE	10/19/23
CHECKED BY		DATE	
REFERENCE NO.		SHEET NO.	1 OF 4



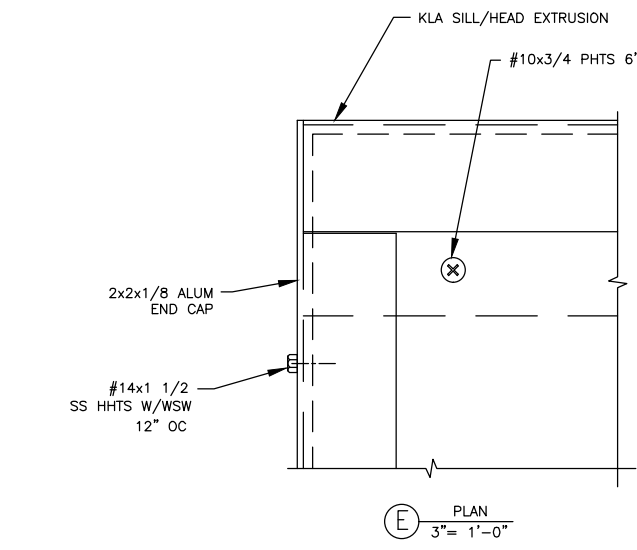
DATE

DESCRIPTION

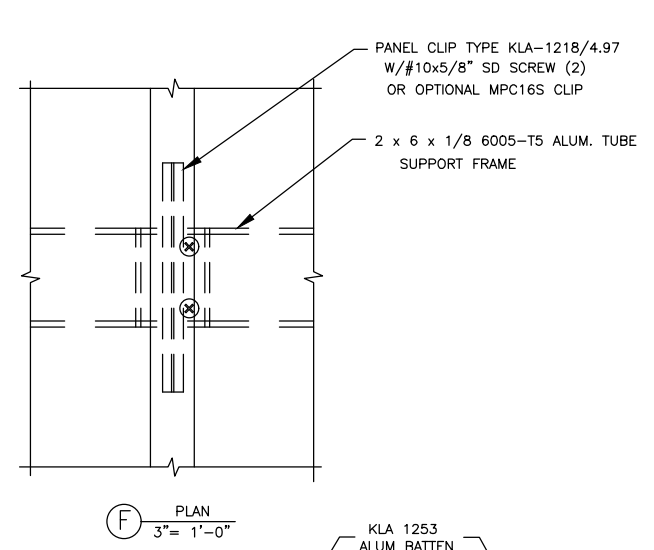
REV.

PROJECT:	BRIEWAY CANOPY SYSTEM
SAMPLE FOR TESTING PER	TAS 202-94, TAS 203-94
ARCHITECT:	
ERECTOR:	

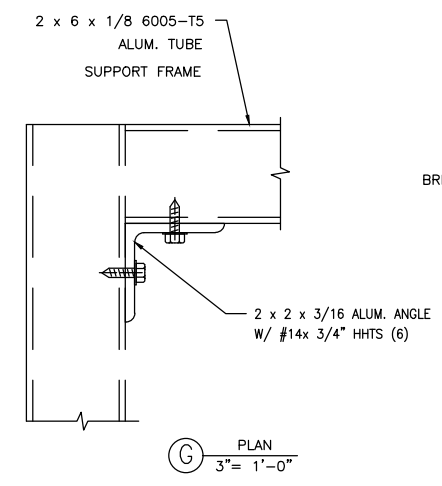
DRAWING NO.	KLA012	REV.	-
DRAWN BY	MG	DATE	10/19/23
CHECKED BY		DATE	
REFERENCE NO.		SHEET NO.	2 OF 4



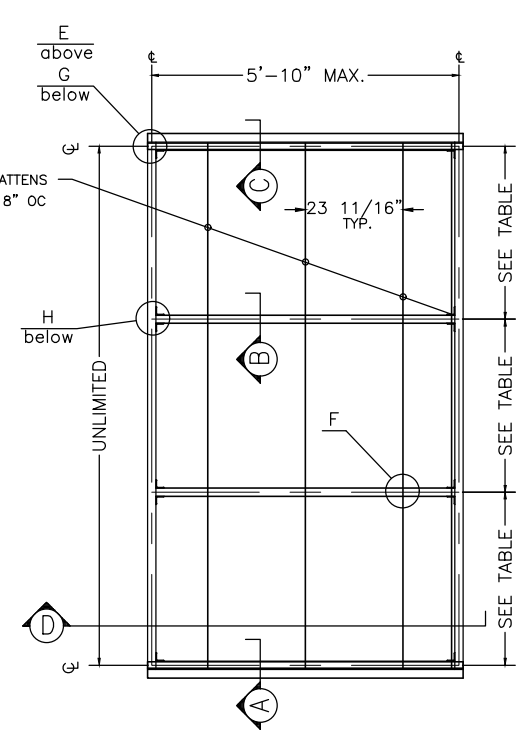
PLAN
3" = 1'-0"



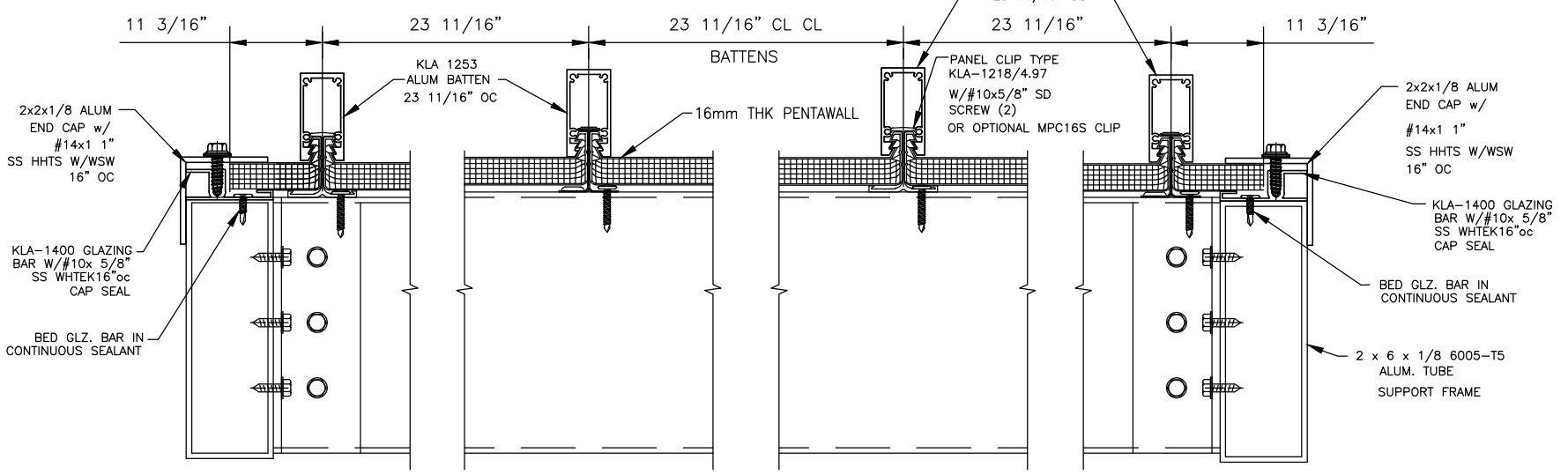
PLAN
3" = 1'-0"



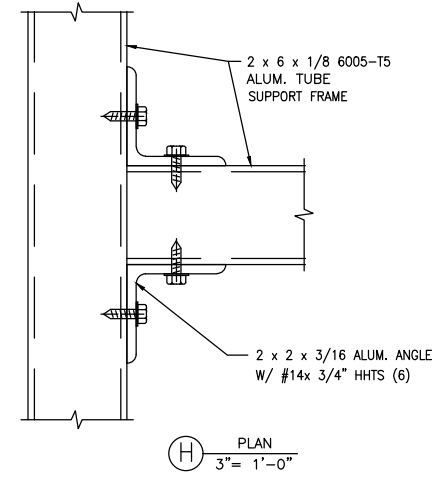
PLAN
3" = 1'-0"



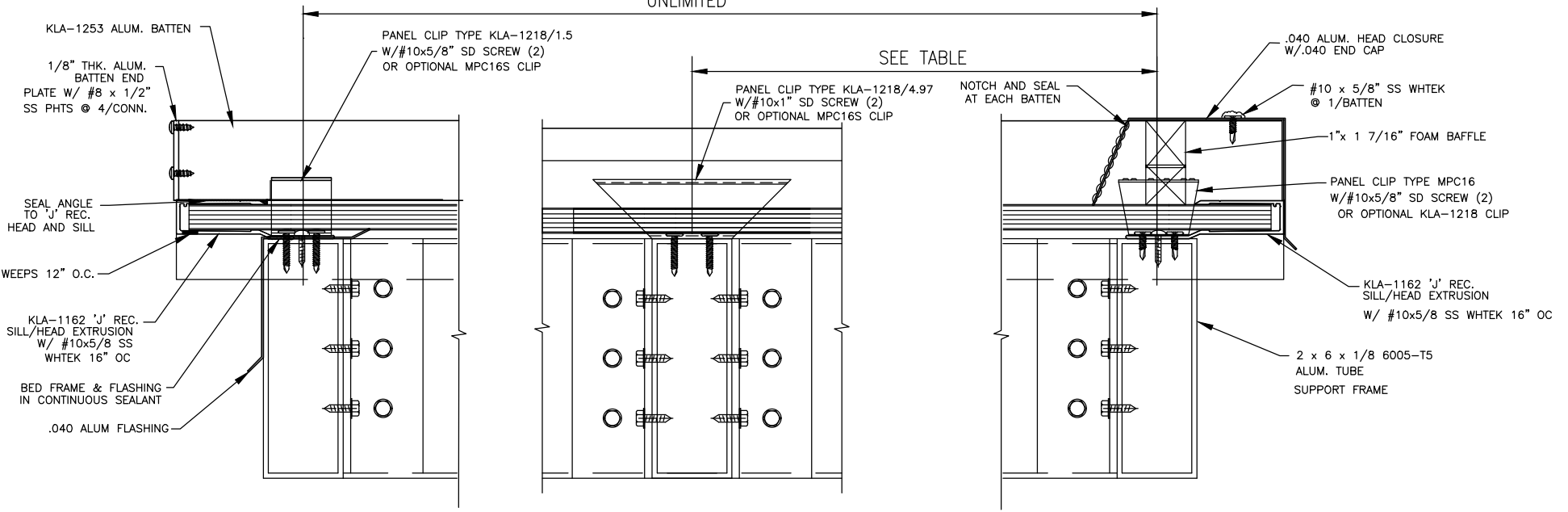
ROOF PLAN
KLA BRITEWAY SKIN SYSTEM
not to scale



SECTION
3" = 1'-0"



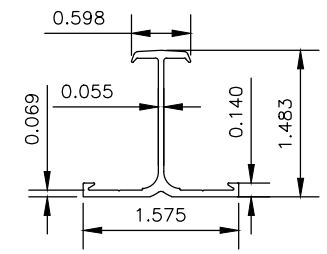
SECTION
3" = 1'-0"



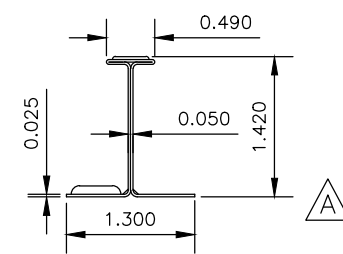
SECTION
3" = 1'-0"

SECTION
3" = 1'-0"

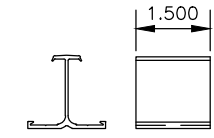
SECTION
3" = 1'-0"



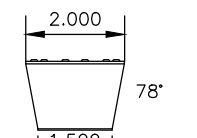
KLA-1218 PANEL CLIP
6005-T5 ALLOY & TEMPER
*MAX. DESIGN PRESSURE = SEE TABLE



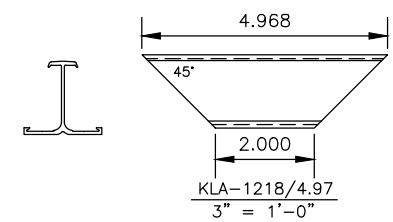
KLA-MPC16S PANEL CLIP
STAINLESS STEEL
*MAX. DESIGN PRESSURE = SEE TABLE



KLA-1218/1.5
3" = 1'-0"



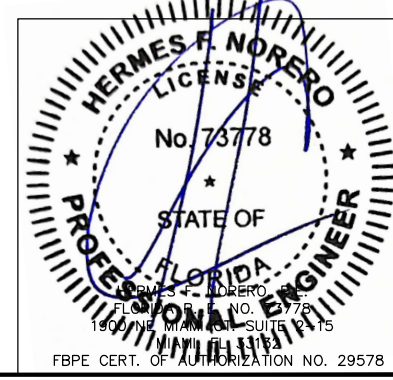
KLA-MPC16S
3" = 1'-0"



KLA-1218/4.97
3" = 1'-0"

DESIGN LOAD (PSF) WITH 2X SAFETY FACTOR	CONNECTOR MATERIAL	PURLIN SPACING	DEFLECTION FOR "H" BATTEN	GLAZING THICKNESS
45 PSF	ALUMINUM	3'6"	0.13"	16MM
60 PSF	ALUMINUM	3'0"	0.11"	16MM
105 PSF	ALUMINUM	2'0"	0.18"	16MM

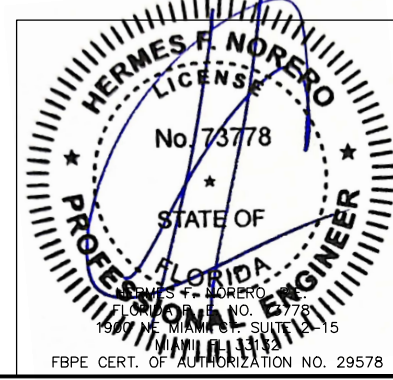
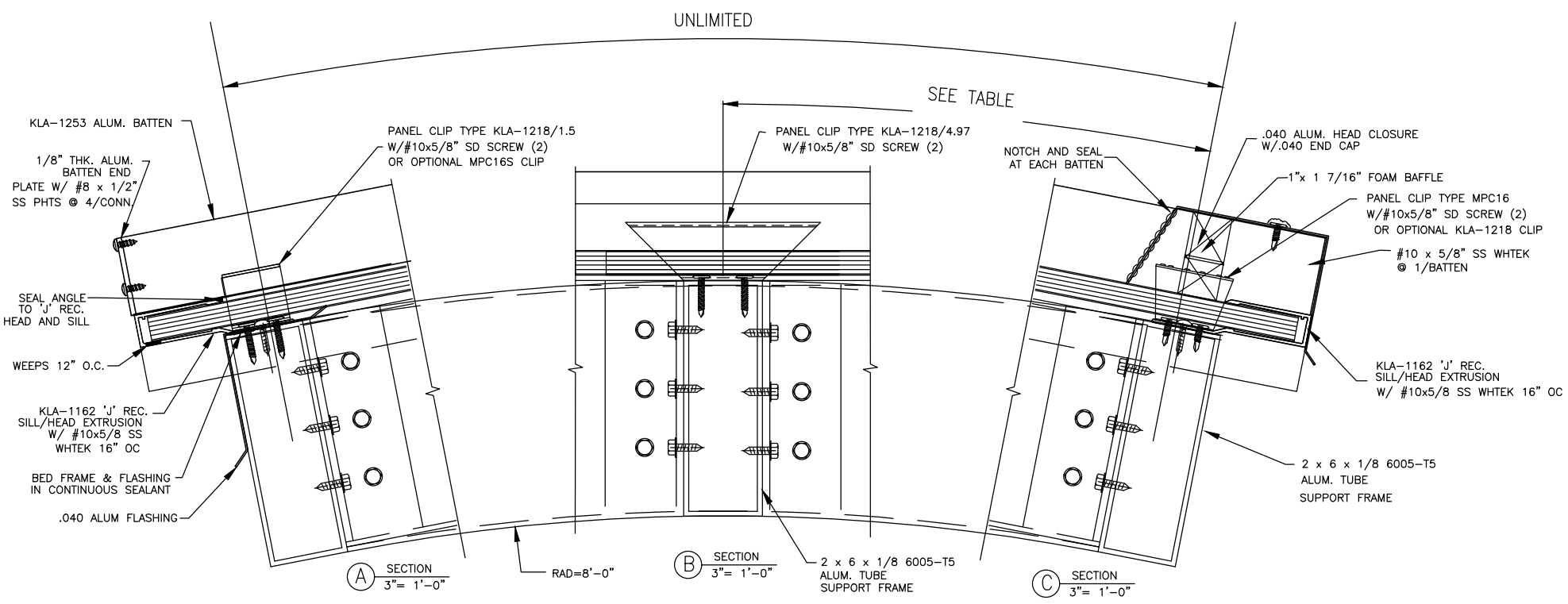
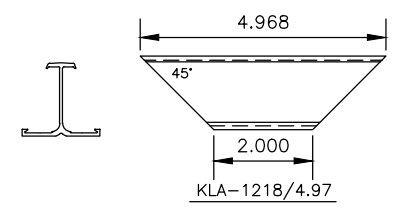
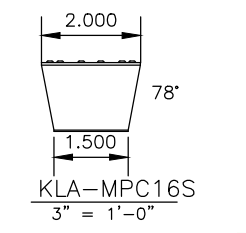
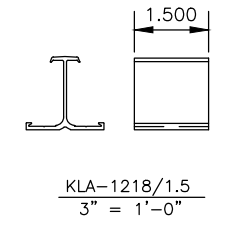
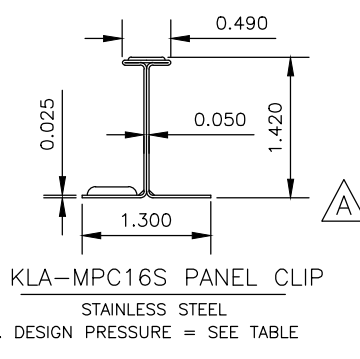
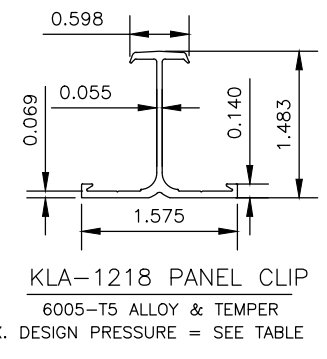
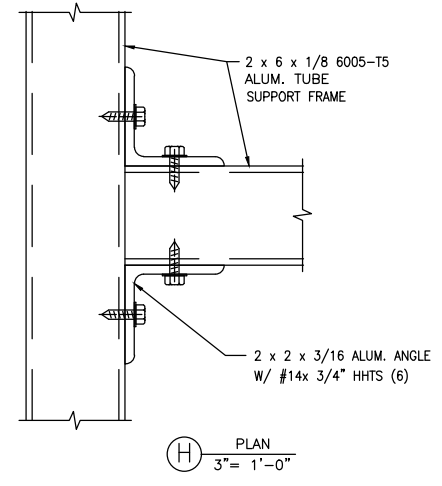
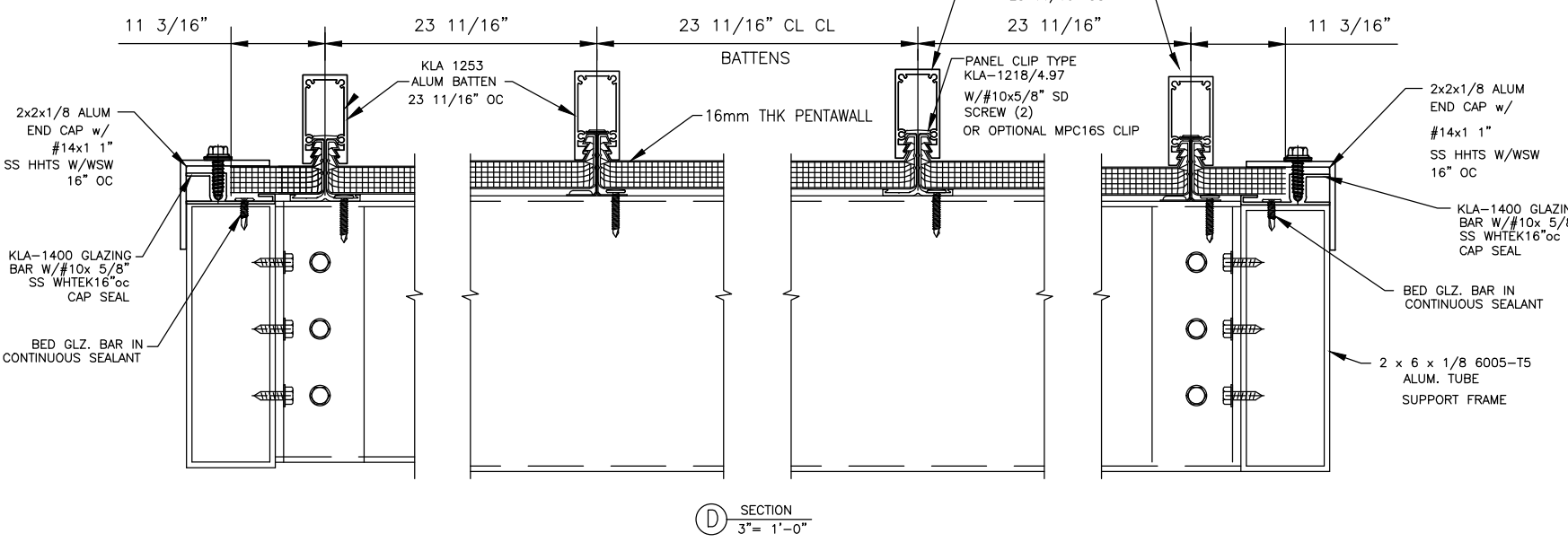
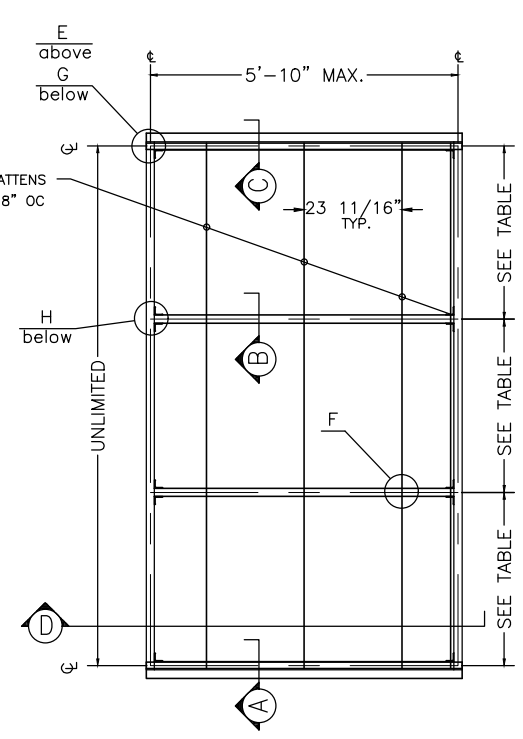
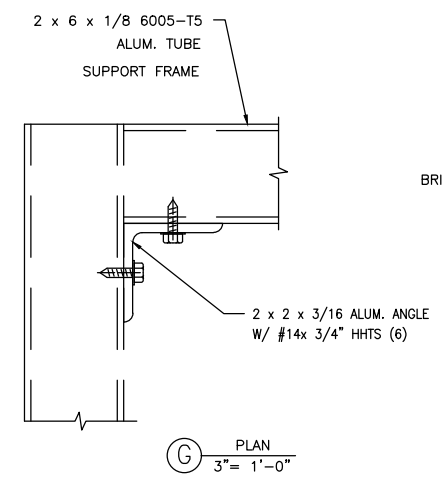
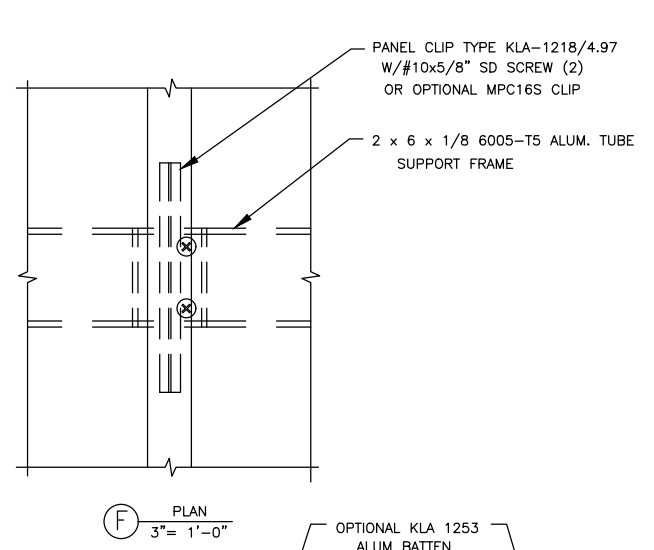
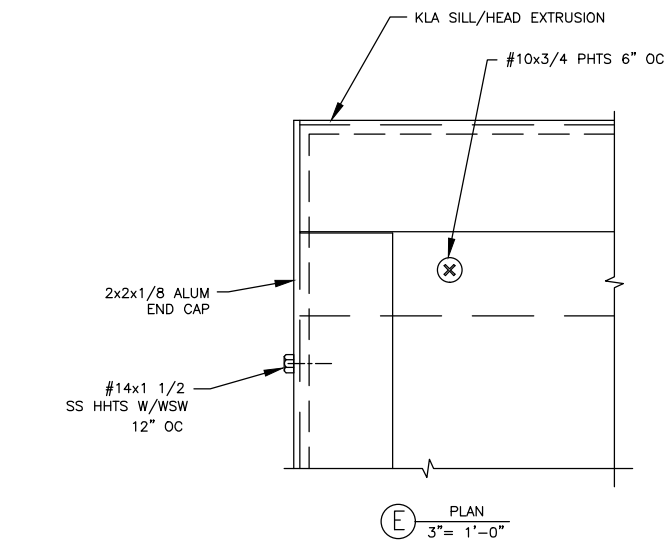
THE STRUCTURAL ADEQUACY OF THE SUPPORTING SUB STRUCTURE IS NOT PART OF THIS APPROVAL AND IT SHALL BE REVIEWED BY THE AUTHORITY HAVING JURISDICTION MAX. DESIGN PRESSURE APPLIES TO ASSEMBLIES SUCH THAT PURLIN AND BATTEN SPACING ARE NOT EXCEEDED AS SHOWN HEREIN



DATE	DESCRIPTION	REV.

PROJECT:	BRITEWAY CANOPY SYSTEM
SAMPLE FOR TESTING PER	TAS 202-94, TAS 203-94
ARCHITECT:	
ERECTOR:	
DRAWING NO.	KLA012
REV.	
DRAWN BY	MG
DATE	10/19/23
CHECKED BY	
DATE	
REFERENCE NO.	
SHEET NO.	3 OF 4





DATE	
DESCRIPTION	
REV.	
<p>28662 N. BALLARD DR. LAKE FOREST, IL 60045 (847) 816-1060 • FAX (847) 816-0425</p>	
PROJECT:	BRIEWAY CANOPY SYSTEM
SAMPLE FOR TESTING PER	TAS 202-94, TAS 203-94
ARCHITECT:	
ERECTOR:	
DRAWING NO.	KLA012
REV.	-
DRAWN BY	MG
DATE	10/19/23
CHECKED BY	
DATE	
REFERENCE NO.	
SHEET NO.	4 OF 4